

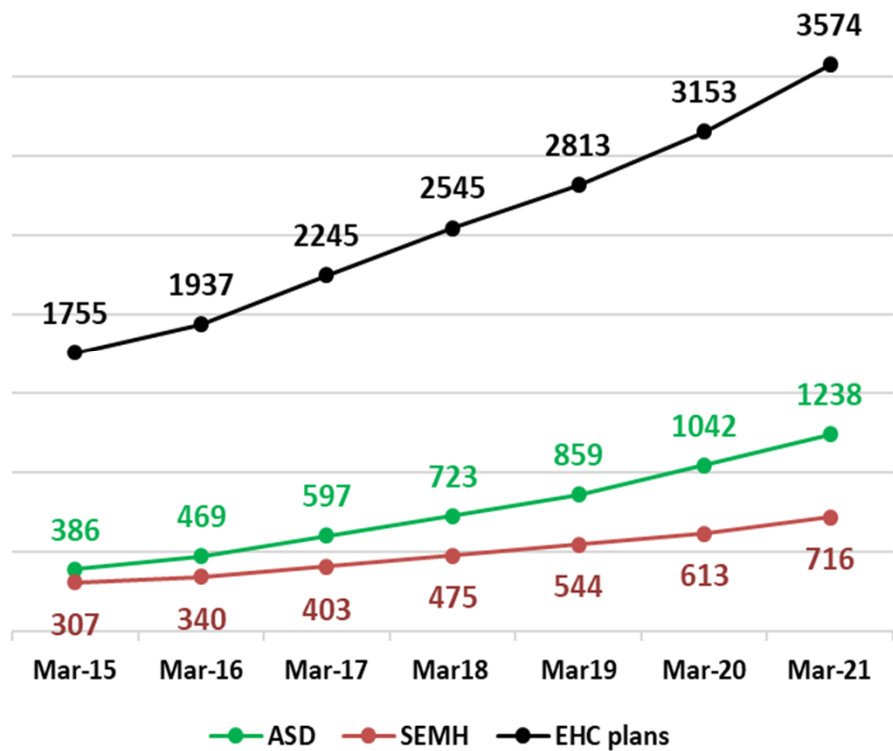
Update on the education of children with SEND

Children and Young Peoples Scrutiny Committee
25th June 2021

During this presentation we will cover:

- Trends in numbers and type of SEND
- Locality based infrastructure
- Progress against the SEND Strategic Plan

EHC plans in North Yorkshire



1.4% of school population (2020 data)

As of the end of March 2021, there were 3574 EHC plans funded by North Yorkshire.

- This is a **102%** increase on the same point in 2015 (following the new SEN CoP).
- The primary needs with the most prominent increases for EHC plans during this period have been:
- Autistic Spectrum Disorder: **+221%** (386 to 1238)
- Social, Emotional, Mental Health: **+133%** (307 to 716)

EHC plans in North Yorkshire – Localities and Primary needs

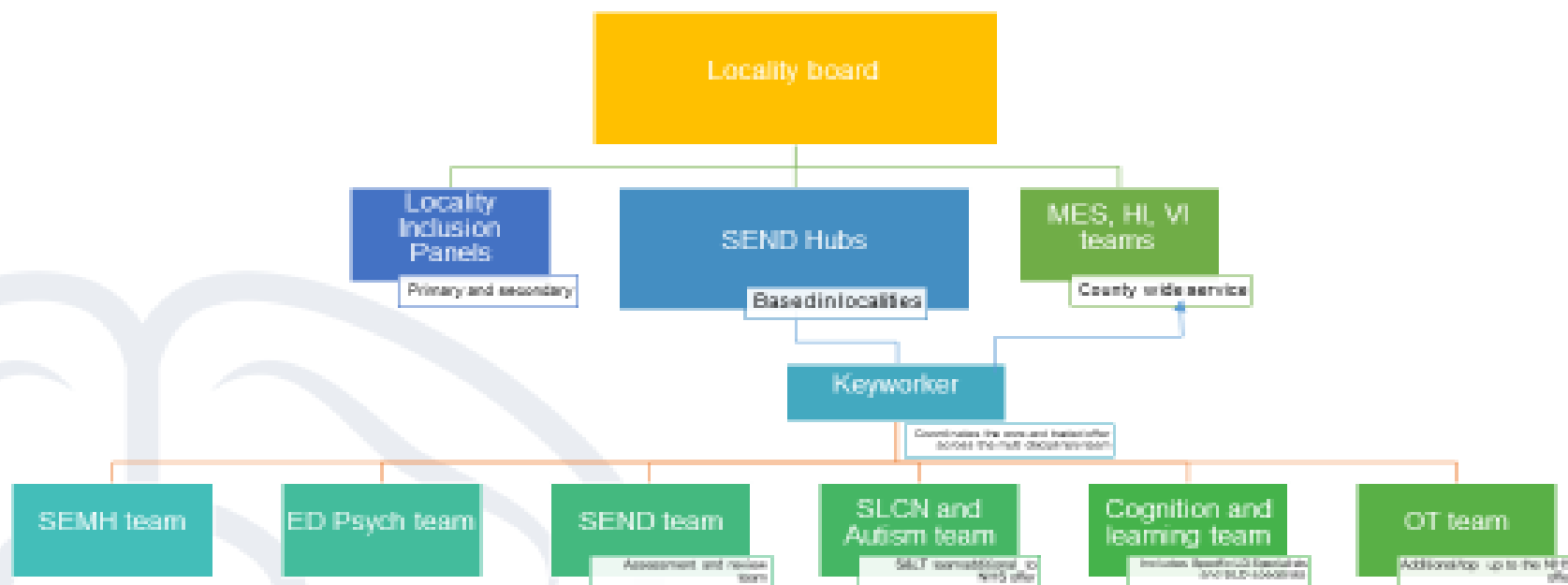
Locality	2021 Total	% Increase since Jan 2015
Craven	285	+77.0%
Hambleton and Richmondshire	727	+85.0%
Harrogate and Knaresborough	951	+96.9%
Scarborough, Whitby, Ryedale	907	+116.5%
Selby	549	+112.8%
Other	31	+121.4%
North Yorkshire Total	3450	+99.7%

Locality	Primary Need				% of Total
	C&I	SEMH	Sensory	C&L	
Craven	8.6%	8.2%	10.0%	6.9%	8.3%
Hambleton and Richmondshire	22.8%	18.2%	21.4%	20.2%	21.1%
Harrogate and Knaresborough	30.2%	23.8%	29.8%	25.1%	27.6%
Other	0.7%	2.5%	0.0%	0.5%	0.9%
Scarborough, Whitby, Ryedale	21.5%	31.8%	20.9%	32.4%	26.3%
Selby	16.3%	15.5%	17.8%	14.9%	15.9%

SEND Locality Based Approaches

Overview of Working Together at Locality

SEND Hubs



OFFICIAL - SENSITIVE

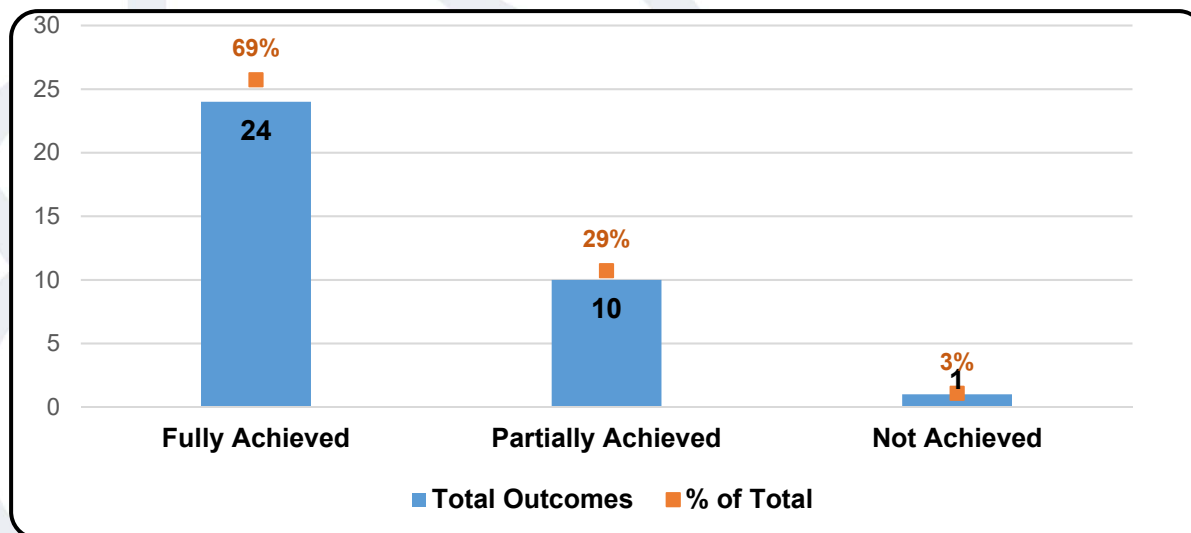
OFFICIAL - SENSITIVE

SEND Hubs

- 4 multi disciplinary teams made up of specialist teachers, practitioners, educational psychologists, SEN caseworkers and speech and language therapists
- Provide direct support to schools and settings in terms of:
 - Early identification and support
 - Direct intervention and support for children and young people with SEND
 - Training and building capacity in schools and settings
 - Lead on the statutory assessment process for Education, Health and Care Plans
- Operate a key worker model allocated within 1 week of referral who will be in touch within 2 weeks of referral
- Offer surgeries / drop-ins for generic advice and support
- Co-ordinate input to provide a seamless service across specialist teams
- Increased support for families- alongside Early Help, Children and Families and NHS colleagues
- Post implementation review of the Inclusion restructure received largely positive feedback with staff feeling confident in their role and well supported

Hub Delivery

SEND Hub	C & L (Early Dev)	C & L (Learning Diff.)	C & L (Portage)	C & I (ASD)	C & I (SLCN)	Hearing Imp	Medical Edu. (Mov & Hand)	MES	SEMH	Visual Imp	Total
<Unknown>	2				2	3		1	1		9
Craven	1	6	6	12	5	32	3	11	20	25	121
Ham/Rich	11	54	22	23	13	63	4	21	48	36	295
Harrogate, Knares, Rip	10	12	13	83	19	72	8	3	60	47	327
Other LA						4				3	7
Scarb, Whi, Rye	9	19	36	37	16	109	9	30	43	44	352
Selby	4	13	12	26	11	40	3	14	21	24	168
Total	37	104	89	181	66	323	27	80	193	179	1279



Locality Boards

- Evolved from the SEND Strategic Plan for Educational Provision building on the ISOS review in 2016 where local leaders stressed their interest in being involved in developments at local level. They now include School Improvement functions to ensure 'join up' across education
- Partnerships between education leaders across 0-25 and the local authority and provide a framework to enable dialogue and collective responsibility for performance at local level, sector led improvement and shaping provision and developments in the area on an ongoing basis
- All 5 Boards established – Craven, Selby, Harrogate/Knaresborough/Ripon, Ryedale and the Coast and Hambleton/Richmondshire
- Locality Boards have identified priorities for improvement in 21/2 and partnership working is becoming embedded

Locality Inclusion Panels

- The Panels take responsibility for oversight of educational provision for vulnerable children at primary and secondary
- Have replaced the former 'collaboratives' and are established in the 5 locality areas from September
- Representatives must have delegated decision making powers if not a Head teacher
- Some are now co-chaired between a School leaders and SEND Hub Managers
- Progress and identified issues are reported to the Locality Boards
- Panels oversee admissions to Alternative Provision

Functions of the Inclusion Panels

- In Year Fair Access Protocol administration – this could include discussion of a child who is EHE whose parent would like a school place
- Access to North Yorkshire Alternative Provision (NYAP) for secondary age pupils
- Access to flexible places in the targeted provisions – primary and secondary
- Solution focussed approach to supporting children referred to the Panel
- Regular monitoring of children on part time timetables, EHE, attending flexible places in TP or PRS
- Overview of pupil progress in NYAP and targeted provisions (on a rota basis, not all presented each meeting), including readiness for reintegration

Parent Carer and Young People Voice

- Parent Carer Voice established in 2019 to replace NYPACT as the recognised SEND Parent Forum. 300 members at present
- Working to establish a locality based model of parent/carers groups in partnership with the local authority
- Involvement in key reviews of services eg social care support for disabled children, development of the new SEND Local Area strategy
- Schedule of meetings established across localities: Let's Talk eg Let's Talk sensory needs, Let's Talk Social Care to blend consultation with top tips and info for families
- Additional sessions from PCV on hot topics for parents- eg this term a series of sessions on sleep with the Sleep Clinic
- SENDIASS steering group now has representatives from all major parent carer groups

SEND Strategic Plan for Education Provision 2018-23

Strategic Plan Content

Plans focus is on developing the continuum of education provision across the county for now and the future. It is set out across:

Universal

Targeted

Specialist

It was updated in 2019 to also include our intentions and aspirations with regards to SEND capital investment and joint commissioning.

Key activities and progress

Universal

SEND Hubs Implemented

Quality Assured CPD Offer

- Reviewed and revised our offer to parents
- Ongoing work to trial accreditation and downloadable course

Between March 2020 and May 2021:

- 88 training courses have been delivered
- 1318 people attended the courses
- 153 evaluation forms have been submitted
- Over 69% said that the course content was excellent, and over 25% said it was good

□ Relationship based approaches

- 18 schools are now participating in the Pivotal programme across the county
- Opportunities area have commissioned Nurture training in Scarborough for 24 schools
- Sidewalk transition project is working with 56 vulnerable year 6 pupils transitioning to secondary and 92 secondary aged pupils providing mentoring
- Evaluation of impact to be undertaken by January 22



Universal cont....

Governance

Locality Boards- Now operational in all localities. All are now developing detailed action plans to address local priorities for Inclusion and School Improvement

Local Area Inclusion Panels- Established in September 2020 to promote collective oversight of children experiencing difficulty, FAP and utilisation of available provision

Communication with Parents

- Funding from CCGs has enabled investment in SENDIASS and PCV social media
- Development of partnership working 'statement of intent' underway

Targeted

PRS Model and Funding fully implemented as planned Sept 2020 £1.2m annual saving

New model reflects an early intervention model to provide support for children at risk of permanent exclusion.

- Joint commissioning arrangement with schools £18k plus £5k school contribution
- Places accessed via local panel-Schools taking ownership of finite resource
- Full year effect of new model impacted by pandemic and will be reviewed in 2022

Independent Alternative Provision Monitoring

- New Directory for schools and parents designed and published
- Minimum standards framework embedded
- Comprehensive schools guidance to assist commissioning and monitoring to be published July 2021

Education other Than at School (EOTAS)

All areas now in one service area – Elective Home Education, Medical Education, Attendance and EOTAS packages



Targeted Mainstream Provisions

- Around 8 full time places per school
- Typically 6 young people with an EHCP and 2 flexible places
- Financial resource provided on a place basis in line with national guidance (similar formula to special schools)
- Offer bespoke timetables that allow access to mainstream curriculum and additional support and therapies
- All provisions will have enhanced access to Occupational Therapy, Speech and Language Therapy and Educational Psychology
- Most likely to support children at band 6 and 7
- Specialise in SEMH and/or C&I

Targeted cont...

Targeted Mainstream Provisions

- Some delay due to pandemic
- First 3 provisions began operation in Jan 2021:
 - Grove Road CP,
 - East Whitby Academy
 - Holy Family
- Early feedback is very positive both from school and parents
- 5 further provisions at various stages of development-Sept 2021 onwards
- Our Strategic Plan sets out the delivery of 31 provisions are needed across the county

TMP Parental Feedback

Parent Feedback

Since our son joined the House at Grove Road, in year 6, it is **the first time that we as parents have not been worried about him during the school day.** We didn't realise **until he was at Grove Road that we had previously been constantly on edge all day, waiting for a call from the school telling us there was a problem.**

Our son loves going to school now. He is able to access learning in a way that he feels he has some control over, and this flexibility means the teaching staff are able to skilfully introduce him to new topics that he would have otherwise refused to engage in, such as baking. They are also able to use the topics and subjects he loves as a means to flexibly engage him in the wider curriculum - without rigidly following a timetable or structure.

Our son has told us that other schools know what autism is, but they don't understand it. At the House, they "get it", and he feels able to be himself.

Demand for Specialist Capacity

Future Growth in EHCPs

2021	2022	2023	2024	2025	2026
3450	3622	3825	3944	4079	4225

Based on current Trends:

- Expect a 24% rise in the number of EHCP's to 2026
- 1258 Special Places in North Yorkshire Special Schools by 2026-Increase of 243 places
- 190 places in High Cost Independent Provision- Increase of 36 places

Total: 329 places

Every % point reduction in Mainstream School placements adds further pressure of 25 places per year into specialist provision

Building Specialist Capacity

- **Increased Special School places** to over **1000** Sept 2021- 25% increase since 2017
- **Capital investment in creating Mowbray Ripon** complete- 60-65 place C&I primary provision-Circa £700k investment
- **Selby Free School** now at design phase. Wellspring announced as the MAT to run 100 place school
- **£250k investment in Springwater** on track for delivery Sept 21

Capital Business case progressing to:

- Develop further provision for SEMH and ASD
- Deliver TMPs
- Improve NYCC Specialist facilities

Capital Investment in SEND Provision

£234k SPCF remaining (already committed to TMPs)

£716k HNPCA allocated by DfE March 2021 (lowest per head figure of all 149 LAs)

£7.55m over 5 years from SCG (forecast sum reduced in the light of DfE modification of SCG formula allocations)

Currently prioritising and rationalising investment programme due to limitations of capital 'pot'

Targeted Mainstream Provisions initially, prioritising 23 instead of required 31-
£3m allocation

Special Capacity and Reducing £9m annual Independent Provision

We need to continue to develop further capacity in the Special school sector due to the ongoing and increasing cost of Independent provision and to meet demand.

Challenge is the limitation of our capital allocations